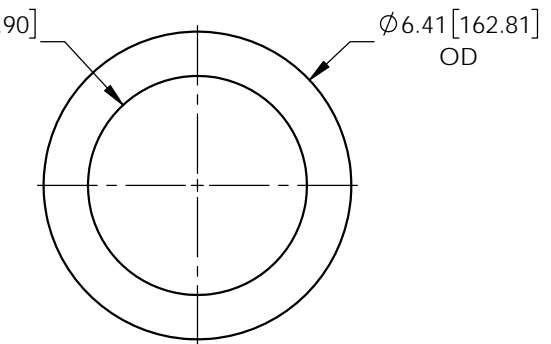
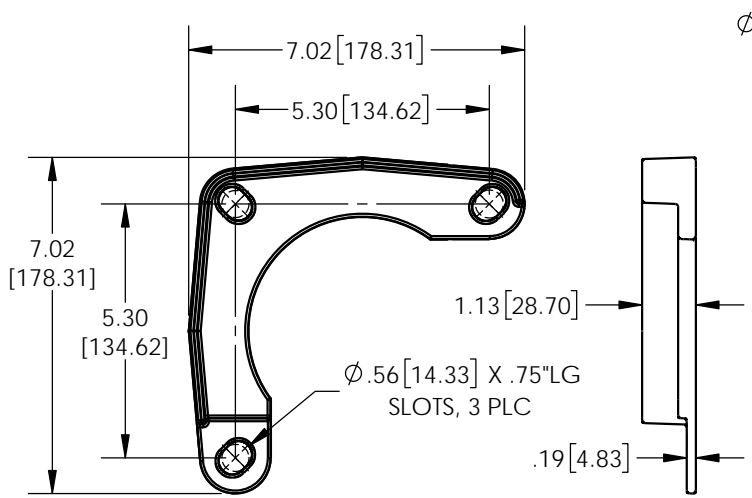
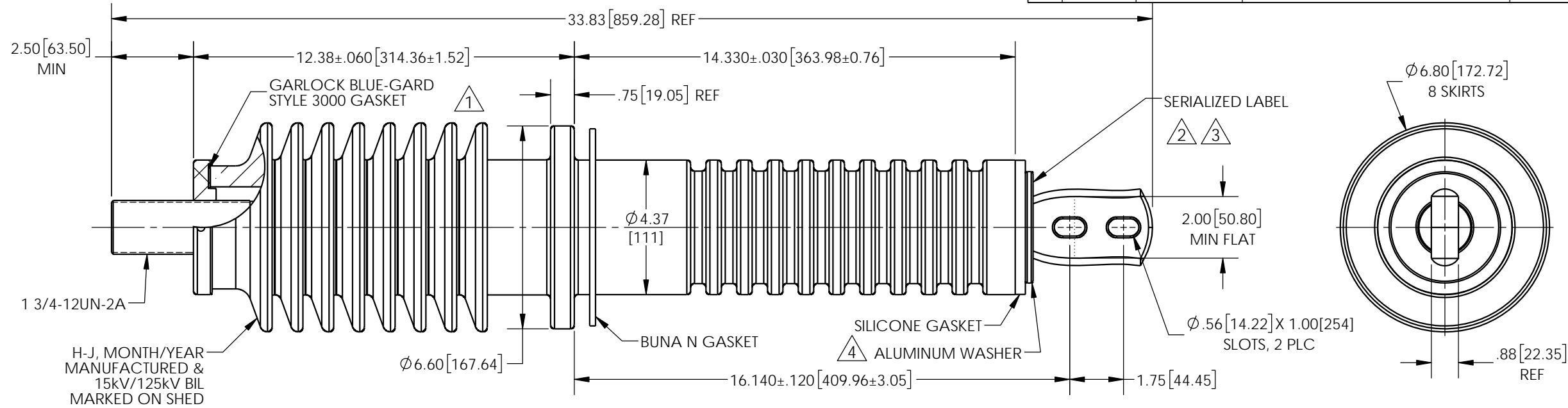


REVISIONS					
REV.	DATE	ECN #	DESCRIPTION	BY	APP'D
1	4/17/2015	HJ15-077	ADDED GASKET, SW REDRAW	TJF	BLB
2	7/20/2015	PQI# E1502001	ADDED SERIALIZED LABEL	CLS	CJT
3	9/30/2015	HJ15-216	MOVED LOCATION OF SERIALIZED LABEL	TJF	CJT
4	2/27/2020	HJ20-084	REDUCED O.D. OF ALUMINUM WASHER	CLS	JDD



BUSHING TO ROOF GASKET
 REQ'D: 1 PER ASSY
 MAT'L: .19" ±.020 THK NITRILE BUNA N

- PORCELAIN NOTES:**
1. WET PROCESS ELECTRICAL PORCELAIN
 2. GRAY GLAZE MUNSELL 5BG 7.0/0.4
 3. TOLERANCE ±3% WITH NOTHING LESS THAN ±.03, UNLESS OTHERWISE NOTED ON DRAWING
 4. BIL: 125kV
 5. 60HZ WITHSTAND: 50KV DRY
45KV WET
 6. CREEPAGE: > 25.20" TOP
> 18.30" BOTTOM
 7. TOP & BOTTOM TERMINALS ARE TIN PLATED
 8. FOR AIR-TO-AIR APPLICATION.

ROOF MOUNTING FLANGE
 REQ'D: 2 PER ASSY
 MAT'L: ALUMINUM

PROPRIETARY AND CONFIDENTIAL
 THE INFORMATION CONTAINED IN THIS DRAWING IS THE SOLE PROPERTY OF H-J ENTERPRISES, INC. ANY REPRODUCTION IN PART OR AS A WHOLE WITHOUT THE WRITTEN PERMISSION OF H-J ENTERPRISES, INC. IS PROHIBITED.

TOLERANCES (EXCEPT AS NOTED)	
DECIMAL	+/- .032"/.8mm
FRACTIONAL	+/-
ANGULAR	+/- 2 Degrees



H - J ENTERPRISES, INC.
 3010 HIGH RIDGE BLVD. HIGH RIDGE, MO. 63049 USA
 PHONE 1-636-677-3421 FAX 1-636-376-1915

**15KV/125KV BIL/2000A
 PORCELAIN BUSHING ASSEMBLY**

MATERIAL		SEE DRAWING	
CHK'D	CJT	APP'D	07/20/15
DRAWING NO.		AS1424-006	
DRAWN BY	CJT	DATE	6/1/07
SCALE		N.T.S.	